



BRASIL

SUSTAINABLE AGRICULTURE AND LIVESTOCK PRODUCTION WITH ENVIRONMENTAL PROTECTION

NATIVE FORESTS COVER 2/3 OF BRAZIL'S TERRITORY

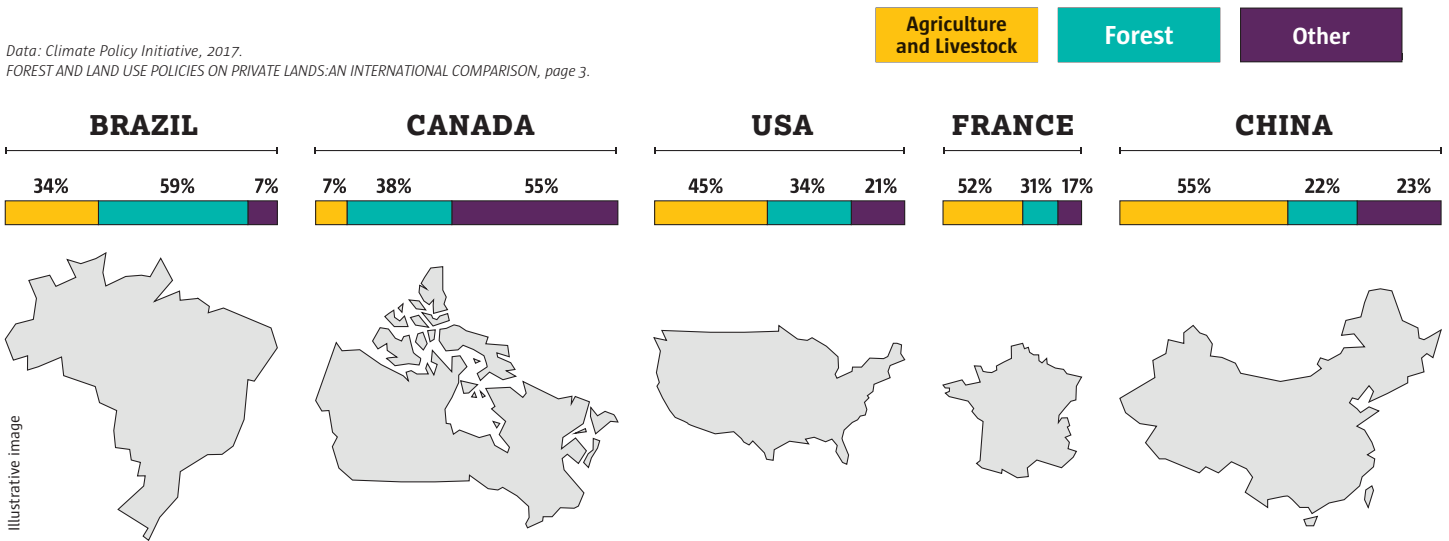
The area represents one of the largest forest areas in the world and comprises significant crop lands. Policies aimed at both combating deforestation jointly with land use regulation encourage the take-up of sustainable agriculture and livestock farming in Brazil. These policies, which include the Forest Code, are particularly stringent in the Amazon and

Cerrado biomes as they require a high level of conservation within private properties.

A recent study by the United States Geological Survey (USGS) in partnership with NASA revealed that plant crop areas cover 64 million hectares, about 7.6% of Brazil's territory

Data: CPI, 2017 <https://climatepolicyinitiative.org/our-work/publications/>

Data: Climate Policy Initiative, 2017. FOREST AND LAND USE POLICIES ON PRIVATE LANDS: AN INTERNATIONAL COMPARISON, page 3.



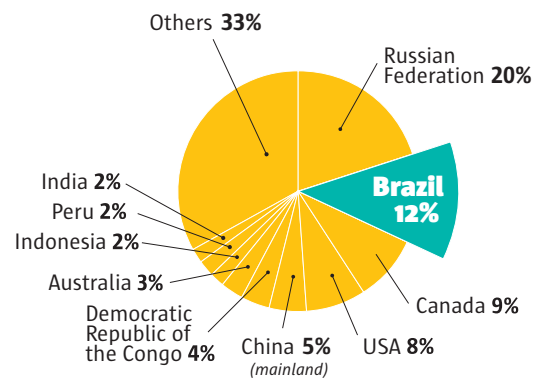
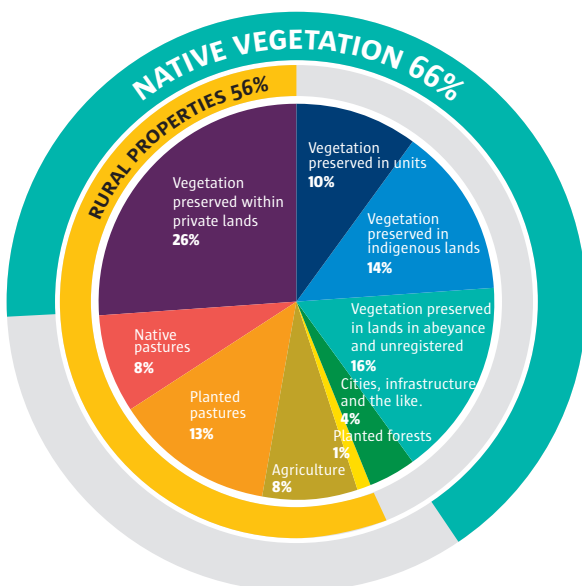
Illustrative image

FOREST PROTECTION

a priority for the country

BRAZIL PROTECTS AND PRESERVES NATIVE VEGETATION

THE SECOND LARGEST AREA OF PRESERVED FOREST IN THE WORLD



Data: FAOSTAT, 2016.

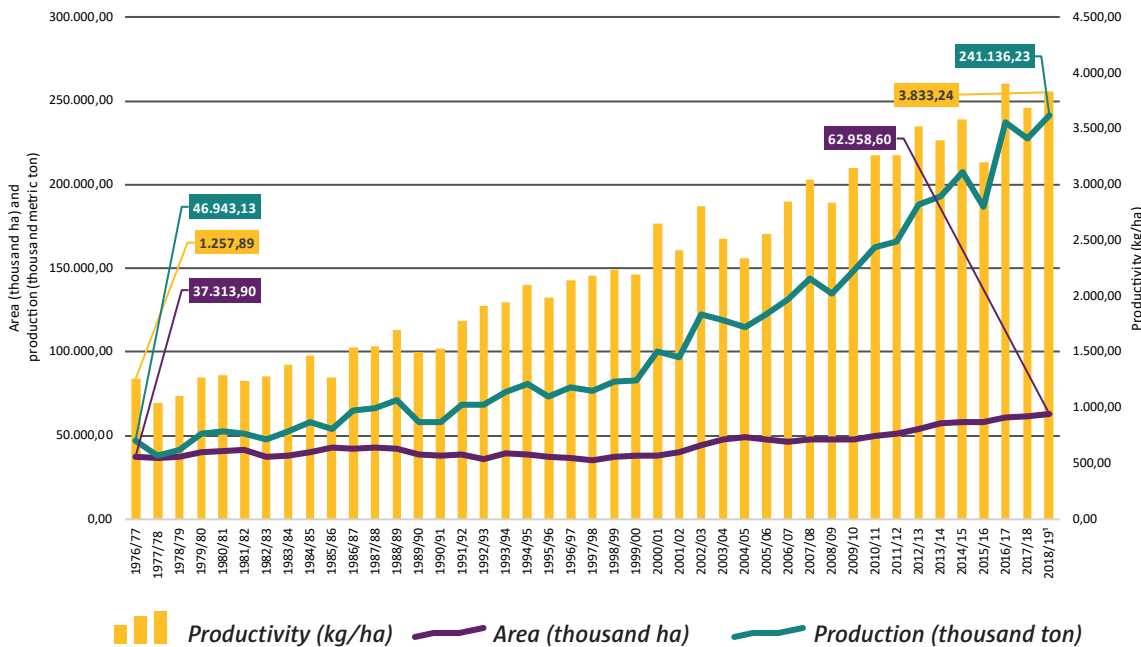
Data: Data: Brazilian Forest Service (SFB), Brazilian Rural Environmental Register System (SICAR), Brazilian Agricultural Research Corporation (Embrapa), Brazilian Institute of Geography and Statistics (IBGE), Ministry of the Environment (MMA), National Indian Foundation (FUNAI), National Department of Transport Infrastructure (DNIT), National Water Agency (ANA), Ministry of Planning, Budget, and Management (MPOG). *Data calculated and estimated by Embrapa's Territorial Strategic Intelligence Group (GITE) in 2018. Proportion of different land uses and occupations in Brazil, 2018. Data: Embrapa's Territorial Strategic Intelligence Group (GITE), 2018.



PRODUCTIVITY **GAINS IN** AGRICULTURE:

AN ACHIEVEMENT DUE TO BETTER LAND USE AND ADVANCEMENTS IN PRODUCTION TECHNIQUES.

GRAINS: AREA, PRODUCTION, AND PRODUCTIVITY



Productivity in **LIVESTOCK BREEDING**

25.5 million tons of meat – beef, pork & chicken: result from integrating pork and poultry chains

EVOLUTION OF PASTURE AREA AND PRODUCTIVITY IN BRAZILIAN STOCKBREEDING

